

 Sewage water

 Civil use

 Industrial use



### PERFORMANCE RANGE

- Flow rate up to **1900 l/min** (114 m<sup>3</sup>/h)
- Head up to **31 m**

### APPLICATION LIMITS

- **10 m** maximum immersion depth (with a sufficiently long power cable)
- Maximum liquid temperature **+40 °C**
- Passage of suspended solids up to **Ø 35 mm**
- Minimum immersion depth for continuous service: **470 mm**

### CONSTRUCTION AND SAFETY STANDARDS

- **10 m** long power cable

EN 60335-1  
IEC 60335-1  
CEI 61-150

EN 60034-1  
IEC 60034-1  
CEI 2-3



### CERTIFICATIONS

Company with management system certified DNV  
ISO 9001: QUALITY

### INSTALLATION AND USE

The **BC 35** series of pumps, manufactured from stainless steel and heavy gauge robust cast iron, resistant to abrasion and long-lasting, are fitted a **DOUBLE-CHANNEL** impeller and are therefore suitable for draining **dirty, sewage and reflux water, and water mixed with putrid mud**. They are suitable for installation in sewers, tunnels, excavations, canals, underground car parks, etc.

### PATENTS - TRADE MARKS - MODELS

- Registered EU Design n. 003863158-0001

### OPTIONS AVAILABLE ON REQUEST

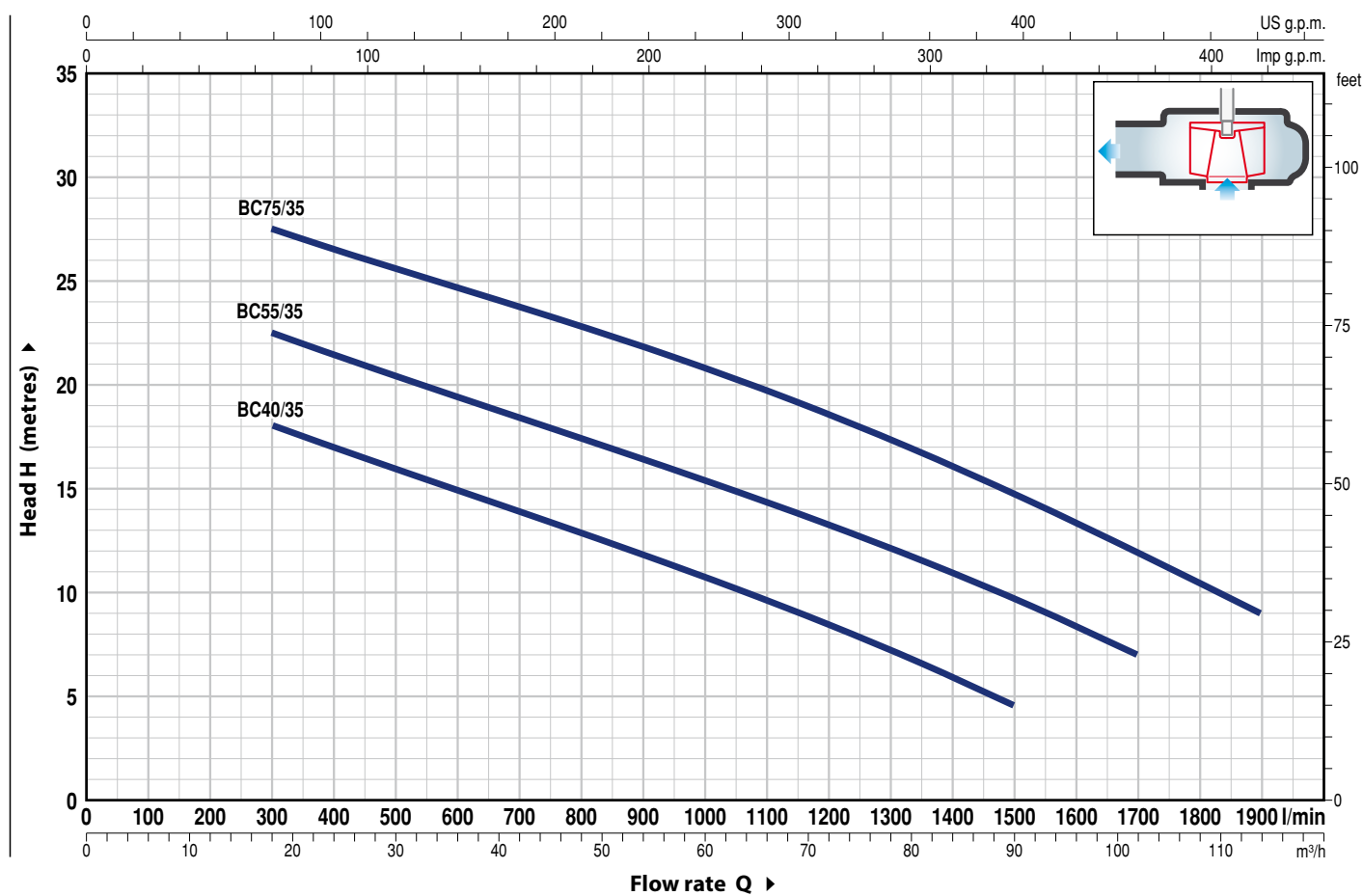
- Pump body with NPT ANSI B 1.20.1 threaded ports
- Other voltages

### GUARANTEE

2 years subject to terms and conditions

## CHARACTERISTIC CURVES AND PERFORMANCE DATA

60 Hz n= 3450 min<sup>-1</sup>




MODEL Three-phase	POWER (P <sub>2</sub> )		Q m³/h l/min	0	18	30	45	60	75	90	102	114
	kW	HP		0	300	500	750	1000	1250	1500	1700	1900
BC 40/35	3	4	H metres	21.4	18	15.9	13.3	10.7	7.8	4.5		
BC 55/35	4	5.5		25.9	22.5	20.4	17.9	15.4	12.7	9.7	7	
BC 75/35	5.5	7.5		31	27.5	25.6	23.3	20.8	18	14.8	11.9	9

Q = Flow rate H = Total manometric head

Tolerance of characteristic curves in compliance with EN ISO 9906 Grade 3B.

POS. COMPONENTCONSTRUCTION CHARACTERISTICS

1	PUMP BODY	Cast iron with an Epoxy Electro Coating treatment, with threaded port in compliance with ISO 228/1			
2	IMPELLER	DOUBLE-CHANNEL type in cast iron with an Epoxy Electro Coating treatment			
3	MOTOR CASING	Stainless steel AISI 304			
4	MOTOR CASING PLATE	Cast iron with an Epoxy Electro Coating treatment			
5	MOTOR SHAFT	Stainless steel AISI 431			
6	TWO MECHANICAL SEALS SEPARATED BY AN OIL CHAMBER				
	Seal	Shaft	Position	Materials	
	Model	Diameter		Stationary ring	Rotational ring Elastomer
	AR-27	Ø 27 mm	Motor side	Silicon carbide	Graphite NBR
	AR-25	Ø 25 mm	Pump side	Silicon carbide	Silicon carbide NBR
7	BEARINGS	6306 ZZ C3 / 6304 ZZ C3			



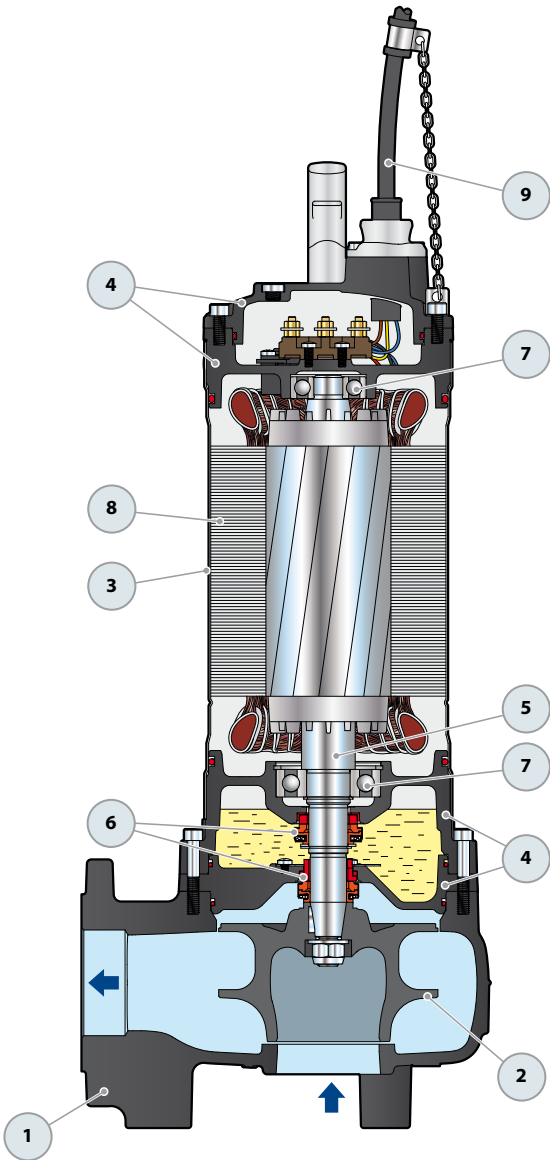
8 ELECTRIC MOTOR

BC 35: three-phase 380 V - 60 Hz  
with thermal overload protector incorporated  
into the winding

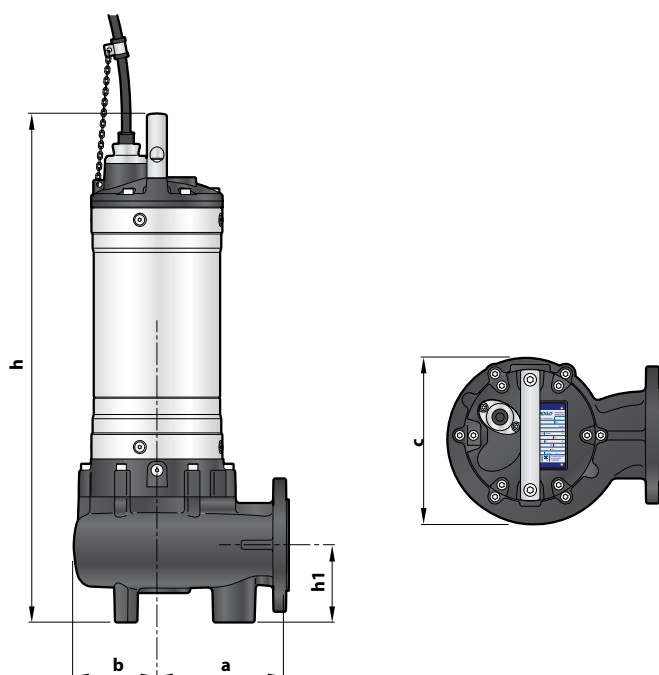
– Insulation: class F  
– Protection: IP X8

9 POWER CABLE

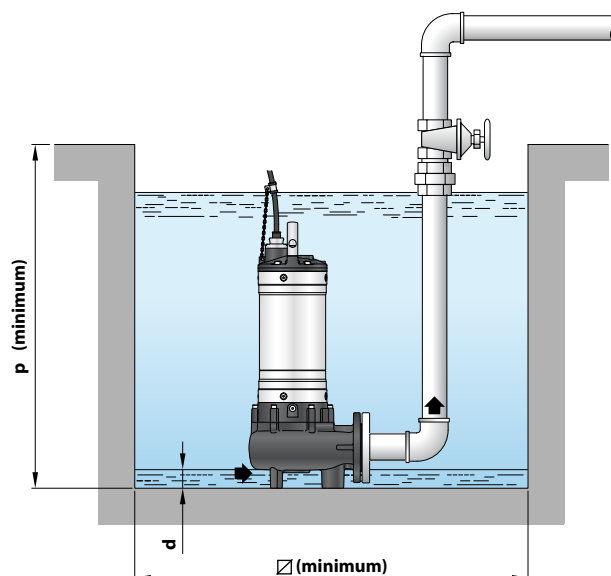
"H07 RN-F" type  
Standard length 10 metres



## DIMENSIONS AND WEIGHT



**Standard installation**



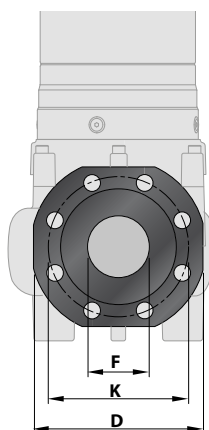
MODEL	Passage of solids	DIMENSIONS mm								
Three-phase		a	b	c	h	h1	d	p	$\varnothing$	3~
BC 40/35	$\varnothing 35$ mm	170	113	225	595	100	40	800	500	<b>56.0</b>
BC 55/35					635					<b>62.2</b>
BC 75/35					665					<b>67.0</b>

## FLANGED PORT

MODEL	FLANGE	F	K	D	HOLES	
Three-phase	DN		mm	mm	N.	$\varnothing$ (mm)
BC 40/35	65 (PN10)	2½"	145	185	4	18
BC 55/35						
BC 75/35						

## ABSORPTION

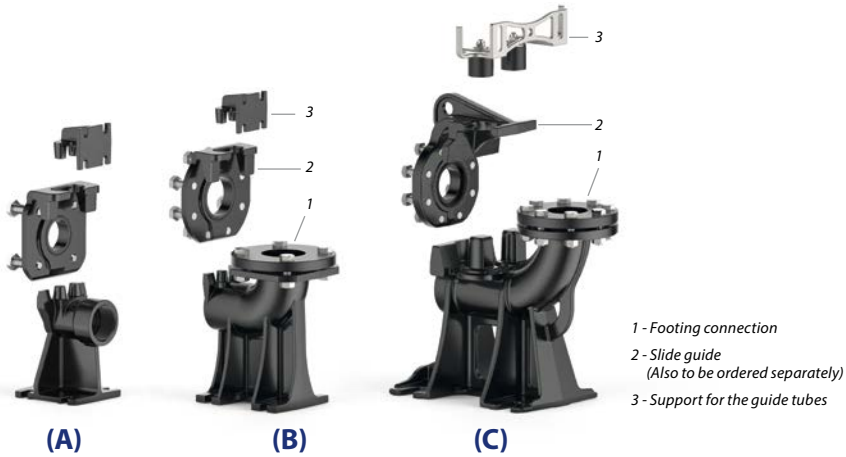
MODEL	VOLTAGE		
Three-phase	220 V	380 V	440 V
BC 40/35	11.3 A	6.5 A	5.5 A
BC 55/35	14.2 A	8.2 A	7.2 A
BC 75/35	26.0 A	15.0 A	13.0 A



## PALLETIZATION

MODEL	GROUPAGE
Three-phase	n. pumps
BC 40/35	12
BC 55/35	12
BC 75/35	12

# SEWAGE LIFTING SYSTEM VX40 – VX50 – VX65 – BC35



## A) HORIZONTAL DELIVERY VERSION WITH ¾" GUIDE TUBES

For <b>VX /40</b>	Cod. ASSPVX40	DN <b>2"</b>
For <b>VX /50</b>	Cod. ASSPVX50	DN <b>2"</b>

Kit consisting of:

- footing connection
- slide guide with screws and seals
- support for the guide tubes

## B) VERTICAL DELIVERY VERSION WITH ¾" GUIDE TUBES

For <b>VX /40</b>	Cod. ASSPVX40V	DN <b>2½"</b>
For <b>VX /50</b>	Cod. ASSPVX503V	DN <b>2½"</b>
For <b>VX /65, BC /35</b>	Cod. ASSPVX653V	DN <b>3"</b>

Kit consisting of:

- footing connection complete with counterflange
- slide guide with screws and seals
- support for the guide tubes

## C) VERTICAL DELIVERY VERSION WITH 2" GUIDE TUBES

For <b>VX /50</b>	Cod. ASSPVX50V	DN <b>3"</b>
For <b>VX /50, VX /65, BC /35</b>	Cod. ASSPVX65V	DN <b>3"</b>

Kit consisting of:

- footing connection complete with counterflange
- slide guide with screws and seals
- support for the guide tubes

### SLIDE GUIDE (Also to be ordered separately)

For <b>VX /40</b> with guide tubes Ø ¾"	Cod. ASSFL011
For <b>VX /50</b> with guide tubes Ø ¾"	Cod. ASSFL009
For <b>VX /50</b> with guide tubes Ø 2"	Cod. ASSFL050
For <b>VX /65, BC /35</b> with guide tubes Ø ¾"	Cod. ASSFL010
For <b>VX /65, BC /35</b> with guide tubes Ø 2"	Cod. ASSFL065

Complete with screws and seals

### ● INTERMEDIATE SUPPORT (To be ordered separately)

For guide tubes Ø ¾"	Cod. 859SV340INTFA
For guide tubes Ø 2"	Cod. 859SV349INTFA



**In order to ensure stability, insert the intermediate support:**

- every 2 metres with ¾" guide tubes (compulsory)
- every 3 metres with 2" guide tubes (recommended)

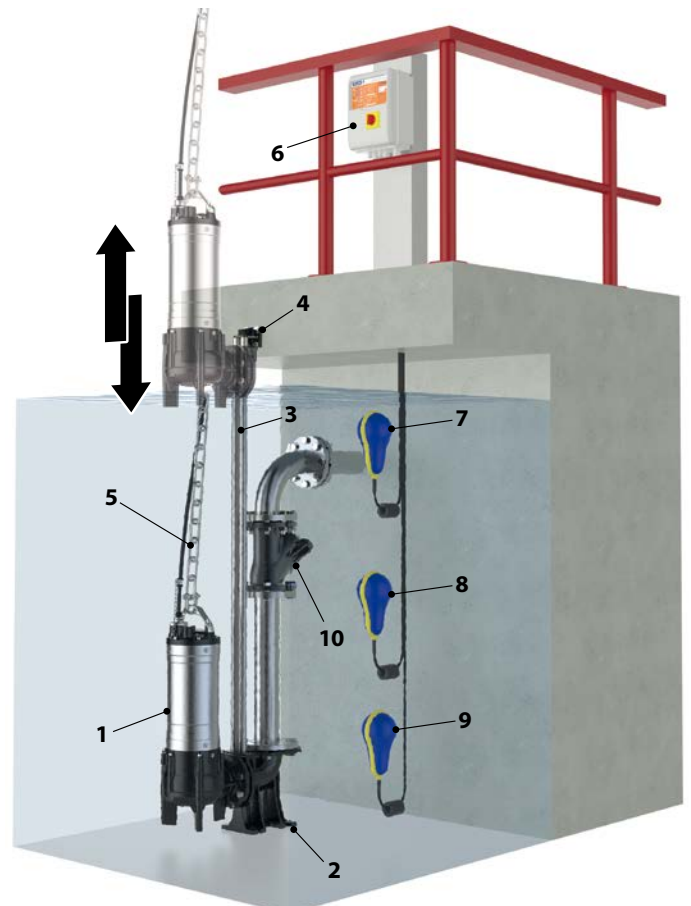
### GUIDE TUBES (AISI 304 stainless steel)

Guide tube Ø ¾"	Cod. 54SARTG005
Guide tube Ø 2"	Cod. 54SARTG006

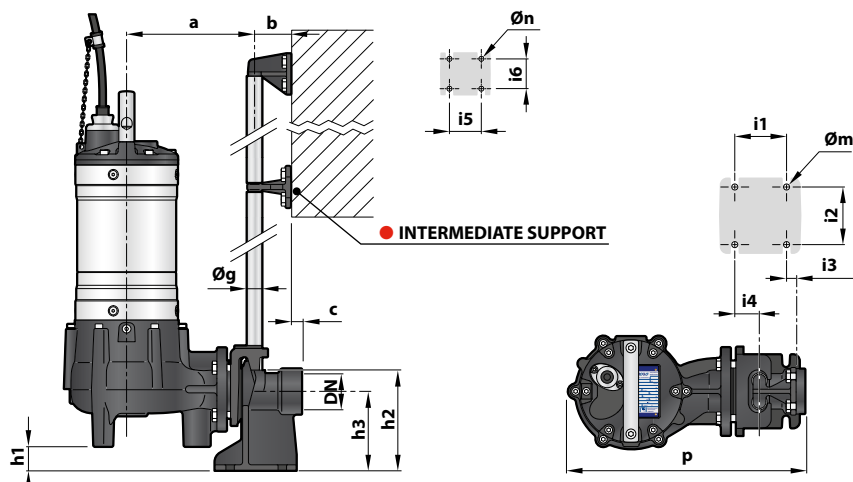
Maximum length of the tube plank: 6 metres

## STANDARD INSTALLATION

1. Pump
2. Footing connection
3. Guide tubes
4. Support for the guide tubes
5. Lifting chain
6. Control box
7. Alarm float switch
8. Starting float switch
9. Stop float switch
10. Non-return valve

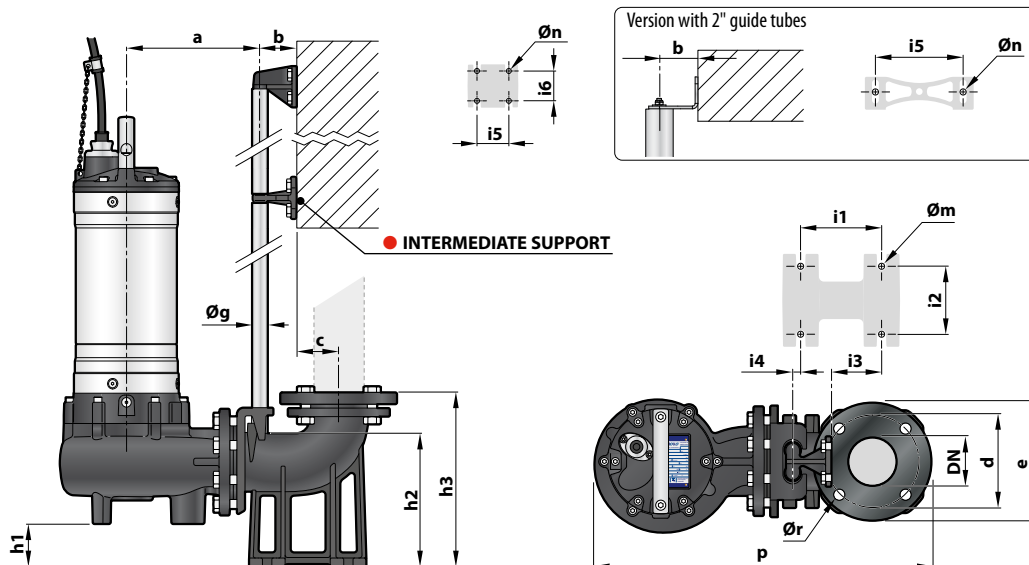


## DIMENSIONS (Horizontal delivery version)



MODEL	Passage of solids mm	PORT DN	DIMENSIONS mm															
			a	b	c	p	h1	h2	h3	i1	i2	i3	i4	i5	i6	Øg	Øm	Øn
VX /40	Ø 40	2"	214	61	17	400	42	165	130	85	94	16	40	50	48	¾"	12	11
VX /50	Ø 50						30											

## DIMENSIONS (Vertical delivery version)



### ● Version with ¾" guide tubes

MODEL	Passage of solids mm	PORT DN	DIMENSIONS mm																
			a	b	c	d	e	p	h1	h2	h3	i1	i2	i3	i4	i5	i6	Øg	Øm
VX /40	Ø 40	2½"	211	61	52	125	165	506	40	164	216	120	72	62	3	50	48	¾"	14
VX /50	Ø 50								28										
VX /65	Ø 65	3"	213	61	69	150	190	537	48	216	280	130	112	84	15	50	48	¾"	14
BC /35	Ø 35		231					550	69										

### ● Version with 2" guide tubes

MODEL	Passage of solids mm	PORT DN	DIMENSIONS mm														
			a	b	c	d	e	p	h1	h2	h3	i1	i2	i3	i4	i5	i6
VX /50	Ø 50	3"						706	107								
VX /65	Ø 65		319	86	95	160	200	697	86	264	392	250	150	34	-	186	-
BC /35	Ø 35							710	107								